



ACME provides a wide range of facility, personnel, and manufacturing services to support customer needs. We have special expertise in facility upgrades to support technology upgrades and complex equipment

**Full Support Services Including :**

- Expert Local, Interstate & National Moves
- Electronics Handling Specialist
- Experienced Certified Crews
- Office Relocation
- Security Clearance
- Licensed, Bonded, Insured
- Specializing in Computer & Equipment Moves
- Professional Pack & Crate
- Feasibility Studies
- Facility Refurbishments
- Reverse Engineering
- Computer Aided Drafting
- Manufacturing Support
- Safe Containerized Storage
- Inventory & Asset Management
- Documentation Shredding/Disposal
- Careful, Dependable, Affordable

**ACME Experts offer:**

- ◆ Facility Management/Enhancements
- ◆ Facility/Equipment Relocations
- ◆ Support Services
- ◆ Dynamic Motion Seats
- ◆ Maintenance Trainers

1710 Randolph Court SE,  
Albuquerque, NM 87106  
Phone: (505) 243-0400 ❖ Fax: (505) 243-0500  
www.acme-worldwide.com

**Current and Previous Customers (Sample):**

Customer	Description
Pan Am Flight Academy SimCom Division	▶ Design, engineering, and integration of Hawker 800 flight simulator
Eclipse Aviation	▶ Design, engineering, and integration of Eclipse 500 simulator
Lockheed Martin Information Systems	▶ Logistical support for operational flight trainers and weapons system trainers for U.S. Air Force ▶ F-16 training simulator and fabrication
U.S. Air Force	▶ Upgrade/Refurb of KC-135 aerial refueling simulator ▶ Upgrade/Refurb of KC-10 BOT refueling simulator to high fidelity capability ▶ Design and Integration of motion seat for H-60G Flight simulator ▶ Multi-location ICS Program for the C-130 aircraft
U.S. Navy	▶ Repair and rework of various Naval aviation training systems ▶ Upgrade and Refurbishment of EA-6B Flight Control Trainer ▶ Upgrade/Refurb of P-3 A/C and Pressurization Trainer
Department of Transportation	▶ Design, engineering, and integration of a full Locomotive Train Simulator
Boeing Corporation	▶ Redesign and Integration of motion seat for V-22 simulator

**NAICS:**

- 541330 ENGINEERING SERVICES
- 541511 CUSTOM COMPUTER PROGRAMMING SVCS
- 541512 COMPUTER SYSTEMS DESIGN SVCS
- 541710 RESEARCH & DEVELOPMENT IN THE PHYSICAL, ENGINEERING



**Contract Vehicles:**

- ▶ General Services Administration  
Contract No: GS-23F-0207S
- ▶ Professional Engineering Services (PES)  
SIN 871-3 Sys. Design, Eng. & Integration  
SIN 871-5 Integration Logistic Support
- ▶ Seaport-e  
US Navy IDIQ for NAVSEA, NAVAIR, NAVSUP, SPAWAR



ACME accepts Visa/Mastercard and the Government "Micro-Purchase" credit card for small purchase orders



**ACME**  
WORLDWIDE  
ENTERPRISES INC

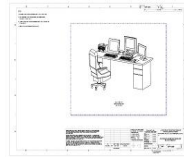
**Facility Maintenance  
Management,  
Equipment Relocation  
and  
Support Services**

*Simplifying Facility Management  
and Equipment Relocation*

**Specialized expertise in Facility Maintenance Management, Relocation Feasibility Studies, Site Surveys, and Facility Upgrades. ACME can help you maximize your facility and its capabilities. We also conduct facility feasibility studies to evaluate cost-effective component and system upgrades. From study to design, and from repair to refurbishment, ACME delivers**

**Site Survey & Feasibility Studies**

- Eliminate problems before occurrence
- Site Evaluations
- Facility Upgrades



**Space Utilization**

- Technology Upgrades
- Relocate assets



**Facility Renovation**

- Paint & Carpentry
- Floors & Ceilings
- HVAC
- Electrical
- Plumbing & Gas



**Hazard Abatement**

- Asbestos Tiles
- Lead-based Paint



**Contents Relocation**

- Professional Pack & Crate
- Electronics Handling Specialists



**Facility and Equipment Relocation**

Whether the facilities and equipment are large or small, ACME has the tools, trained technicians, and company experience to relocate the most complex equipment and systems across the street or across the country, quickly and efficiently. With or without the original manufacturers support documentation, ACME can efficiently relocate equipment, machinery, and trainer/simulator systems

To ensure cost-effective, secure, and timely relocation, ACME uses time tested procedures that ensures the highest degree of

**Relocation Process**

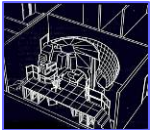
- **Evaluation, Testing, and Documentation**  
Establishes equipment baseline  
Photograph the entire process
- **Disassembly and Relocation**  
Inventory, Audit, and Pack
- **Reassembly**  
On site, per customer directions  
Repair as Necessary
- **Performance Evaluation**  
Test, Resolution, and baseline match

**Support Services**

ACME offers a wide range of support services to help boost our customer's productivity and effectiveness. We provide Engineering staff and manufacturing

**Engineering Support**

- Computer Aided Drafting (CAD/Solidworks)
- Reverse Engineering
- System Integration
- System and Component Analysis



**Staff Support**

- Electrical Engineering
- Contract IT and Software Support
- Documentation format/content upgrades and digitization
- Mechanical Engineering (PE Certified: NM Lic No. 16643)
- Technical Writers



**Manufacturing Support**

- Full-Capability Electrical/Mechanical Fabrication/Integration
- Instrument Repair and Refurbishment
- Sheet Metal Fabrication
- CNC Machine Shop Capabilities

