



ACME offers full Mechanical, Electrical and Software Engineering capabilities. Our team has extensive experience supporting both commercial and government customers and programs across a wide

Professional Engineering Services including:

- Mechanical Engineering
- Electrical Engineering
- Software/Computer Engineering
- Licensed Professional Engineering (PE)

We focus on...

- ◆ Safety, maintainability, and reliability while meeting specific design requirements
- ◆ Manufacturing, ease of assembly, and human factors during design to lower overall costs

1710 Randolph Court SE,
Albuquerque, NM 87106
Phone: (505) 243-0400 ♦ Fax: (505) 243-0500

Current and Previous Customers (Sample):

Customer	Description
Pan Am Flight Academy SimCom Division	▶ Design, engineering, and integration of Hawker 800 flight simulator
Eclipse Aviation	▶ Design, engineering, and integration of Eclipse 500 simulator
Lockheed Martin Information Systems	▶ Logistical support for operational flight trainers and weapons system trainers for U.S. Air Force ▶ F-16 training simulator and fabrication
U.S. Air Force	▶ Upgrade/Refurb of KC-135 aerial refueling simulator ▶ Upgrade/Refurb of KC-10 BOT refueling simulator to high fidelity capability ▶ Design and integration of motion seat for H-60G Flight simulator ▶ Multi-location ICS Program for the C-130 aircraft
U.S. Navy	▶ Repair and rework of various Naval aviation training systems ▶ Upgrade and Refurbishment of EA-6B Flight Control Trainer ▶ Upgrade/Refurb of P-3 A/C and Pressurization Trainer
Department of Transportation	▶ Design, engineering, and integration of a full Locomotive Train Simulator
Boeing Corporation	▶ Redesign and Integration of motion seat for V-22 simulator

NAICS:

- 541330 ENGINEERING SERVICES
- 541511 CUSTOM COMPUTER PROGRAMMING SVCS
- 541512 COMPUTER SYSTEMS DESIGN SVCS
- 541710 RESEARCH & DEVELOPMENT IN THE PHYSICAL ENGINEERING
- 333319 OTHER COMMERCIAL & SERVICE INDUSTRY MACHINERY MANUFACTURING



Contract Vehicles:

- ▶ General Services Administration
Contract No: GS-23F-0207S
- ▶ Professional Engineering Services (PES)
SIN 871-3 Sys. Design, Eng. & Integration
SIN 871-5 Integration Logistic Support
- ▶ Seaport-e
US Navy IDIQ for NAVSEA, NAVAIR, NAVSUP, SPAWAR

ACME accepts Visa/Mastercard and the Government "Micro-Purchase" credit card for small purchase orders



ACME
WORLDWIDE
ENTERPRISES INC

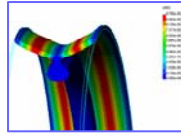
Professional Engineering Services

*Narrowing the Gap
between Simulation and Reality*

Engineering Services

Mechanical Engineering

- Detail design using 3-D Solids Modeling
- Finite Element Analysis utilizing Cosmos/Works and Cosmos/M
- Load Concentrations
- HVAC



Electrical Engineering

- Specialty avionic data buses and computer I/O Systems
- Audio Systems
- Control Loading
- Lighting Systems



Software/Computer Engineering

- Computer System/Network
- Creating/Upgrading Software
- Interface Systems
- LINUX based Real Time Executive



Licensed Professional Engineering

ACME also offers licensed Professional Engineer (PE) services (NM Lic # 16643) Only a licensed engineer may prepare, sign, seal, and submit engineering plans and drawings to a public authority for approval, or seal engineering work for public and private clients.

Supported Engineering Cycles

Our process integrates all aspects of the engineering process into a coherent and effective solution from initial requirements determination through post-acceptance support.

Strategic Planning for Technology Programs/Activities

- The interpretation of high-level organizational engineering requirements and the objectives and approaches to their achievement.

Concept Development and Requirement Analysis

- The preliminary planning and evaluation of alternative technical approaches and associated costs for the development/enhancement of high-level general performance specifications of a system.

System Design, Engineering and Integration

- The translation of a system concept into a preliminary/detailed design. Risk identification/mitigations performed to produce a working prototype model.

Test and Evaluation

- The application of various techniques demonstrating that a prototype system performs in accordance with the objectives outlined in the original design.

Integrated Logistics Support

- The engineering-specific logistics support including material goods, personnel, and operational maintenance and repair of systems throughout their life cycles.

Acquisition and Life Cycle Management

- The planning, budgetary, contract and system/program management functions required to procure and/or produce, render operational and provide life cycle support to technology-based systems, activities, subsystems, projects, etc.

Contractor Logistics Support (CLS) and Integrated Logistics Support (ILS)

Maintenance Concept/ILS Plan

- Complete life-cycle evaluations based on MTTR, MTBF, and costing
- Training/Instruction
- Spares and consumables

Repair Parts/Provisioning

- Evaluate equipment and Systems
- Determine/Procure Required Spares
- Repair, Maintain, and Upgrade Equipment

Tools & Test Equipment

- Specialized tools to fit the system

Publications/Manuals

- Fully documented system support
- Contract Support



ACME provides CLS for this equipment
and many more

